

PROUDLY MADE IN  **india**

LABQUEST  
BY **BOROSIL**<sup>®</sup>

PRACTICAL

ushni<sup>iv</sup>

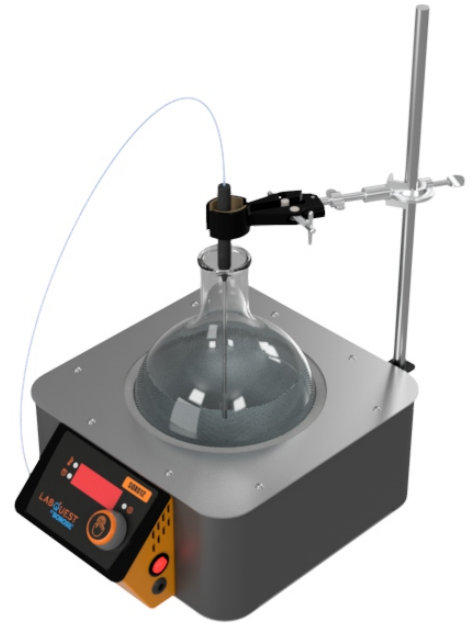
**GME** Heating Mantles  
with energy regulator



RUGGED

ushni<sup>iv</sup>

**GMC** PRECISION  
Heating Mantles



PRECISION HEATING & STIRRING MANTLES

SMART

Manufactured in  
**BOROSIL**<sup>®</sup>  
TECHNOLOGIES



SAFE



INTELLIGENT



PRECISION

# ushniv उष्णिव

It's about *heating* with *care*

The intelligently designed safe heating mantles provide safety cutoff with precise heating along with features of time and temperature display like never before.

Tempering organic liquids placed in round bottom flasks for

Boiling

Evaporation

Distillation

Extraction

## GME Heating Mantles



- Mechanical energy regulator for power regulation.
- Automatic spill detection and safety shutdown
- Protective fuse to prevent risk of electrocution.
- Process indicator LED
- Chemical and heat resistance plastic used for the control panel.

Model	GME250	GME500	GME010
Flask Capacity	250 ml	500 ml	1 L
Flask Diameter	85 mm	105 mm	135 mm
Exterior dimensions* (W x D x H)	(300 x 265 x 160) mm		
Working Temperature range	Ambient to 400°C		
Mechanical Energy Regulator	0 - 100%		
Electrical Requirements	0.65A	0.87 A	1.30 A
Power Consumption	150 W	200 W	300 W
HSN Code	84198990		
Ordering information	BLFHGME25000000000	BLFHGME50000000000	BLFHGME01000000000

**Product carries no warranty.**



## SAFE

Inbuilt safety control

Auto heater cut off to protect the unit in case of accidental

Visual & Audio error indicator to user



## INTELLIGENT

LED display of time, temperature & process status

User temperature setting upto 400 °C & Time upto 16 hours



## PRECISION

Precise temperature control upto +/- 1 °C

Temp range upto 400 °C with no effect on the glass yarn

### GMC Precision Heating Mantles

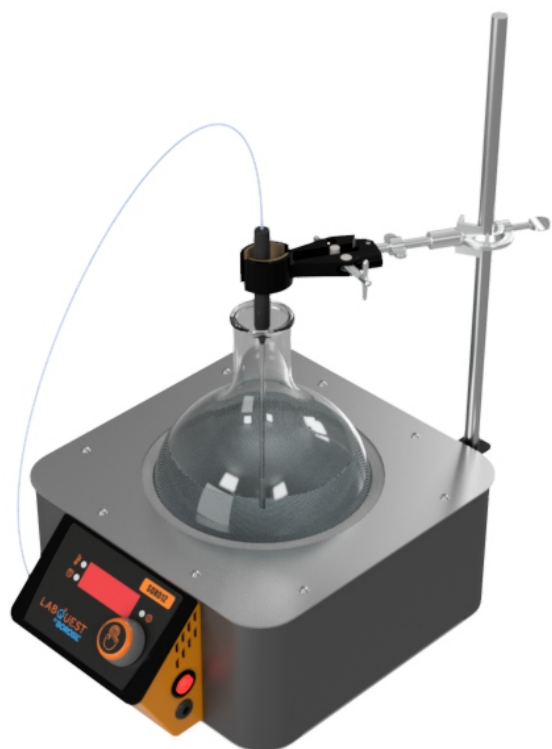


- Automatic spill detection and safety shutdown.
- Safe temperature setting to prevent accidents.
- Chemical and heat resistance plastic used for the control panel.
- Rotary knob for precise setting of temperature and time.
- Integrated PID control for better temperature accuracy.
- Built in calibration for error setting.
- Includes PT 100 external temperature probe with auto detection on plug in.
- Large character digital display for better visibility.
- Digital timer with 1 to 999 min time setting.
- Digital energy regulator with 10 step power regulation.
- Integrated retort rod holder for space saving apparatus assembly.

Model	GMC250	GMC500	GMC010
Flask Capacity	250 ml	500 ml	1 L
Flask Diameter	85 mm	105 mm	135 mm
Exterior dimensions* (W x D x H)	(310 x 330 x 160) mm		
Working Temperature range	Ambient to +5°C to 400°C		
Display	LED Display with time, temperature & process status		
Temperature Accuracy	±1.0°C		
Timer	1-999 Minutes		
Electrical Regulation	0.65 A	0.87 A	1.30 A
Power Consumption	150 W	200 W	300 W
HSN Code	84198990		
Ordering information	BLFHGMC25000000000	BLFHGMC50000000000	BLFHGMC01000000000

Product carries **no warranty**.

# PRECISION HEATING MANTLE



- Introducing the sturdy elegant HMC series of Precision Heating Mantles by Borosil
- Temperature controller that precisely controls fluid temperature upto an accuracy of  $\pm 1^{\circ}\text{C}$
- Offers additional safety by automatic power cut off after exceeding set temperature
- Hold flasks and bottom flasks
- Flexible yarn heating element
- Maximum element temperature  $400^{\circ}\text{C}$  for adequate heating
- Thermally insulated, electrically grounded and powder coated metal body
- Stainless steel top for corrosion resistant handling
- Quick clamp feature for easy heating element replacement
- Pre threaded hole at the rear for accessory mounting

Model	HMC020	HMC050	HMC011
Flask Capacity	2 L	5 L	10 L
Flask Diameter	166 mm	255 mm	279 mm
Working Temperature range	Ambient $+5^{\circ}\text{C}$ to $420^{\circ}\text{C}$	Ambient $+5^{\circ}\text{C}$ to $420^{\circ}\text{C}$	Ambient $+5^{\circ}\text{C}$ to $420^{\circ}\text{C}$
Display	LED Display with time, temperature & process status	LED Display with time, temperature & process status	LED indication with energy Setting from 0-9
Temperature Accuracy	$\pm 1.0^{\circ}\text{C}$	$\pm 1.0^{\circ}\text{C}$	$\pm 1.0^{\circ}\text{C}$
Timer	0-999 Minutes	0-999 Minutes	0-999 Minutes
Exterior dimensions* (W x D x H)	(263 x 355 x 136) mm"	(430 x 335 x 170) mm	(450 x 603 x 215) mm
Electrical Requirements	2.5 A	3 A	6 A
Power Consumption	450 W	600 W	1200 W
HSN Code	84198990	84198990	84198990
Ordering Information	BLFHHMC02000000000	BLFHHMC05000000000	BLFHHME01100000000

# PRECISION HEATING & STIR MANTLE

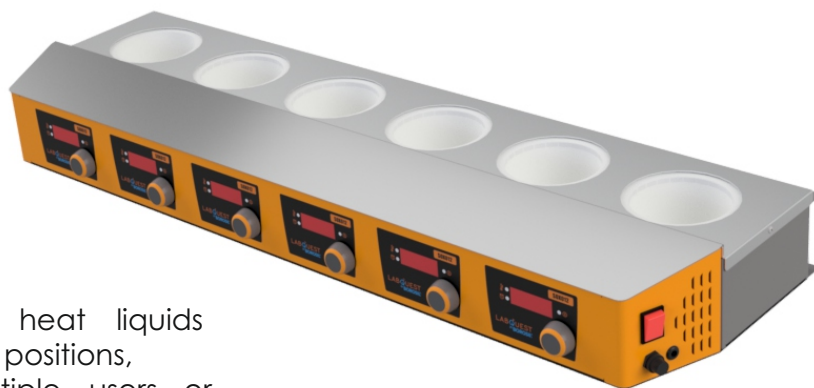
- **Energy & Speed** regulator for temperature control
- Thermally insulated, electrically grounded and powder powder coated metal body
- Stainless steel top plate for corrosion resistant handling
- Quick clamp feature for easy heating element replacement



Model	PRM250	PRM500	PRM010	PRM020
Flask Capacity	250 ml	500 ml	1 L	2 L
Flask Diameter	85 mm	105 mm	131 mm	166 mm
Working Temperature range	Ambient +5°C to 450°C			
Display	LED indication for process status			
Temperature Accuracy	±1.0°C			
Speed	200-2200 rpm			
Exterior dimensions (W x D x H)	(225 x 170 x 150) mm		(265 x 335 x 200) mm	
Electrical Requirements	1 A		2 A	
Power Consumption	150 W	200 W	300 W	450 W
HSN Code	84198990			
Ordering information	BLFHPRM25000000000	BLFHPRM50000000000	BLFHPRM01000000000	BLFHPRM02000000000

PRM for 5 L , 10 L available on request

# MULTI POSITION HEATING MANTLE



Mantles are used in chemistry to heat liquids in round bottom flasks. There are multiple positions, ideal for busy laboratories with multiple users or experiments needing different set temperatures at the same time. The metal case is designed to remain cool when in operation and is easy to clean.

Each heating element and mantle position are double-fused for total safety. In the event of any liquid spillage, the heating mantle automatically cuts out to protect the user from the possibility of electric shocks. A retort rod is included for each position.

- Six positions, 250ml flask capacity
- Six positions, 500ml flask capacity

Temperature is controllable via an energy regulator, and Timer Settings upto 999min or continuous mode.

Product Code	BLFHMPM06200000000	BLFHMPM06500000000
Heating Position	6	6
Max Flask Capacity	250 ml	500 ml
Temperature Range	Ambient +5°C to 400°C	
Temperature Control	Digital Energy Regulator (1-10)	
Liquid Temperature	97°C for Water	
Display Timer	0-999 min and Infinite	
Material of construction	M.S Powder coated body with SS304 Top Plate	
Unit Dimensions (L x W x H)	1000 x 330 x 135 (mm)	

Spares Coils for Mantles available on request.

**BOROSIL®**  
BOROSIL LIMITED

1101, Crescenzo, G-Block, Opp. MCA Club,  
Bandra Kurla Complex, Bandra (E), Mumbai - 400 051, India  
T : +91 22 6740 6300 F : +91 22 6740 6514  
E : borosil@borosil.com W : www.borosil.com

Manufactured by :  
**BOROSIL TECHNOLOGIES LTD.**  
21-24, Plot No. 8, Indialand Global Industrial Park,  
Hinjewadi Phase - 1, Pune - 411 057

